

# GROVE AT MERCED

## West Covina

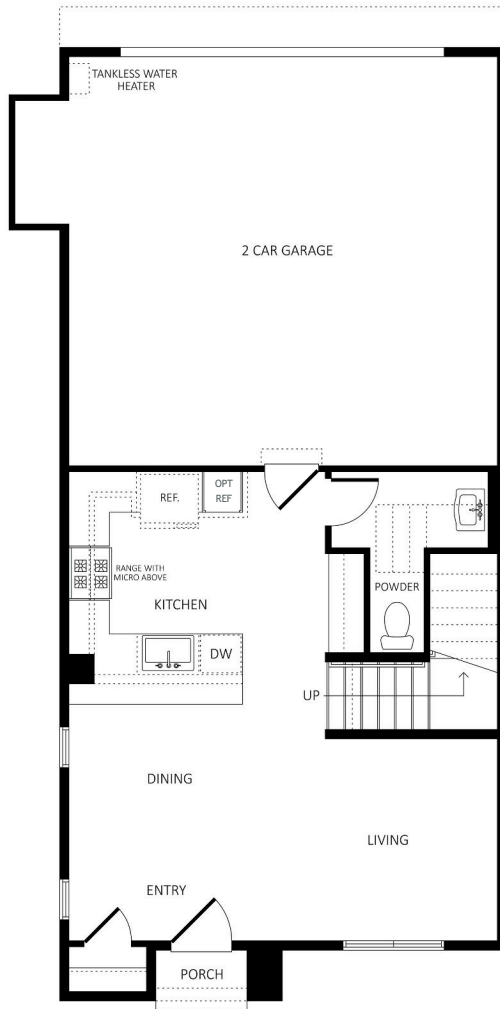
### Plan 3

2-story Townhome | Approx. 1,485 - 1,533 sq. ft.

3 Bedrooms + Loft or 4 bedrooms | 2.5 Baths | 2-car garage

Laundry Room

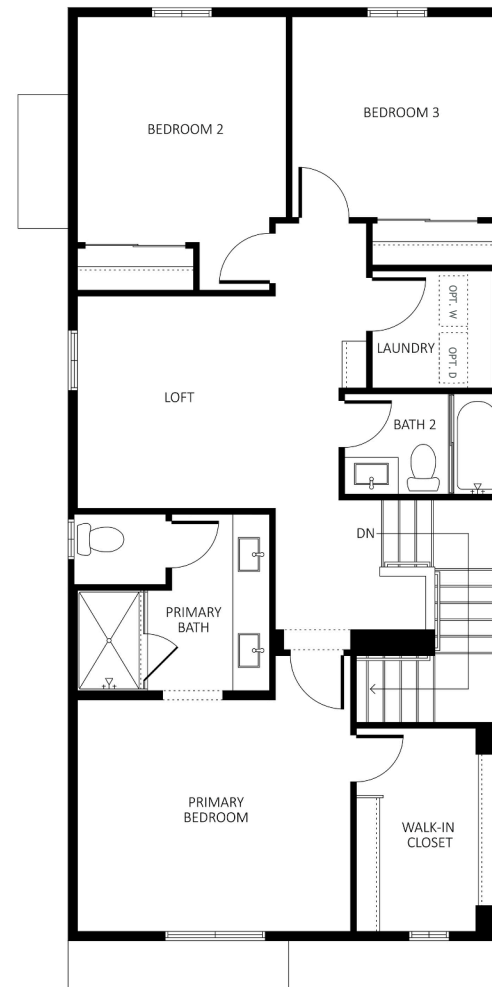
First Floor



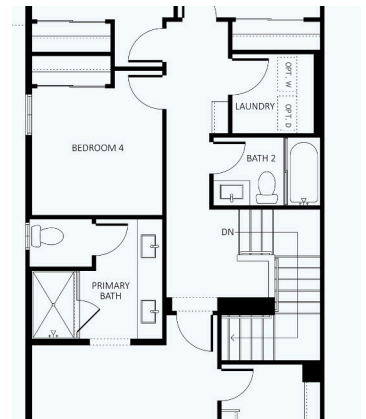
Plan 3 first floor varies per building and site location. Variations may occur at entry door and at first floor powder bath. See Sales Manager for additional details and availability.



Second Floor



Plan 3 second floor varies per building and site location. A fourth bedroom in lieu of Loft may be included. See Sales Manager for additional details and availability.



**SALES OFFICE:** 1912 W. Merced Ave., West Covina, CA 91790 | (213) 700-6508 | [www.RCHomesInc.com](http://www.RCHomesInc.com)

Richard Castellon, DRE #02022593 | [Richard@RCHomesInc.com](mailto:Richard@RCHomesInc.com)

All options and upgrades require additional charges and are subject to construction cut-off dates. In the effort to improve our product, Grove at Merced, LLC floor plans are subject to change without prior notice. No exact representation is implied. Dimensions and square footage are approximate and may vary based on location and actual construction. Locations and sizes of windows, doors, closets, plumbing fixtures, appliances, A/C unit, cabinets, stair railings, and other structural elements may vary from the diagram. Floor plan is an artist rendering and used for representational purposes only. See a sales counselor for additional details. RC Homes, Inc. DRE #02123697. Information deemed reliable as of August 2024.