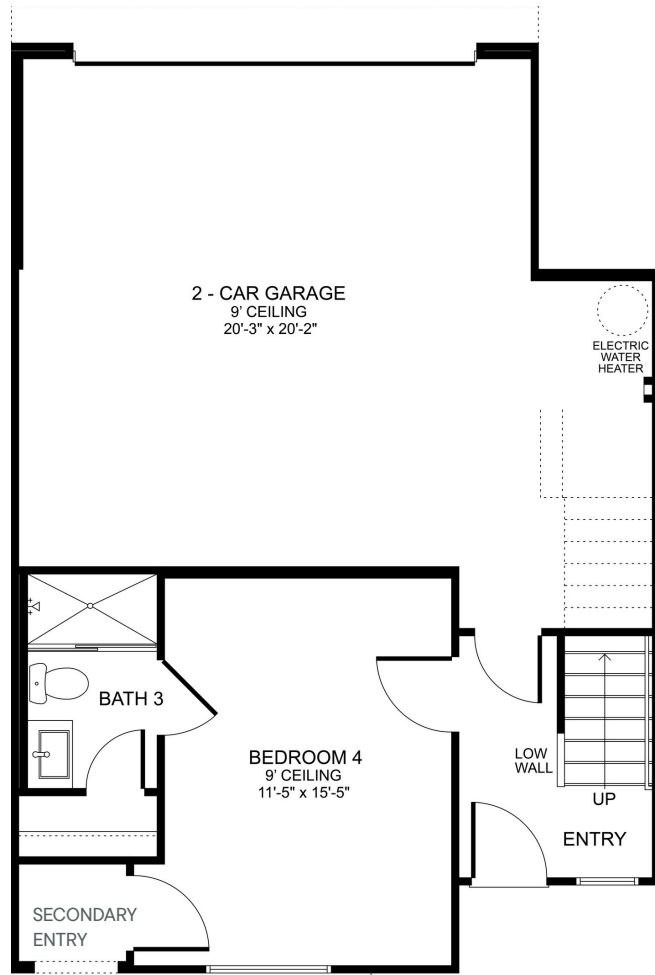


The Heights

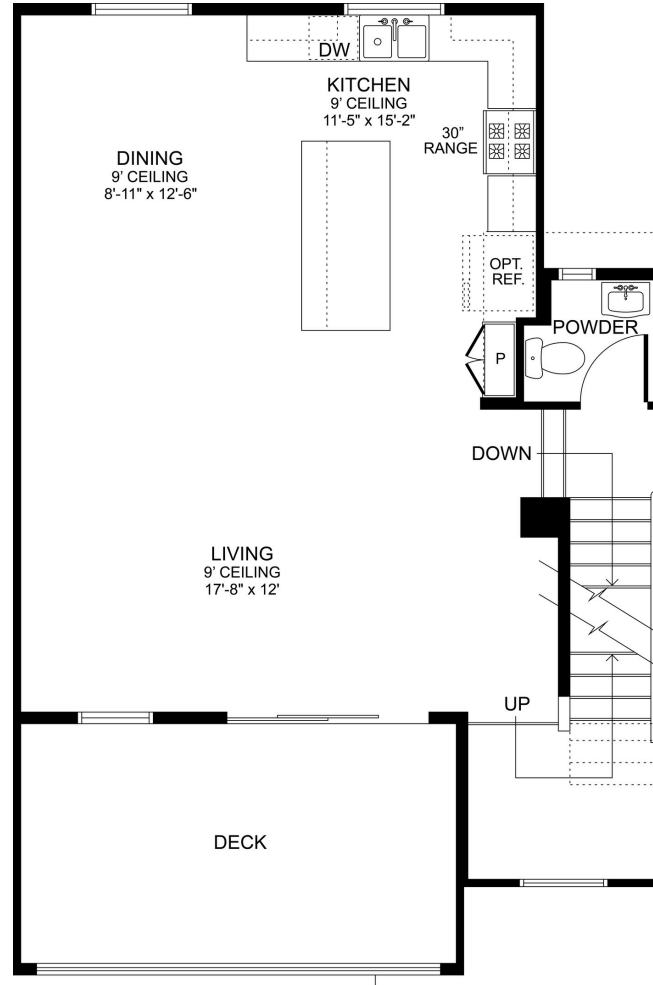
SAN PEDRO

Plan 2A

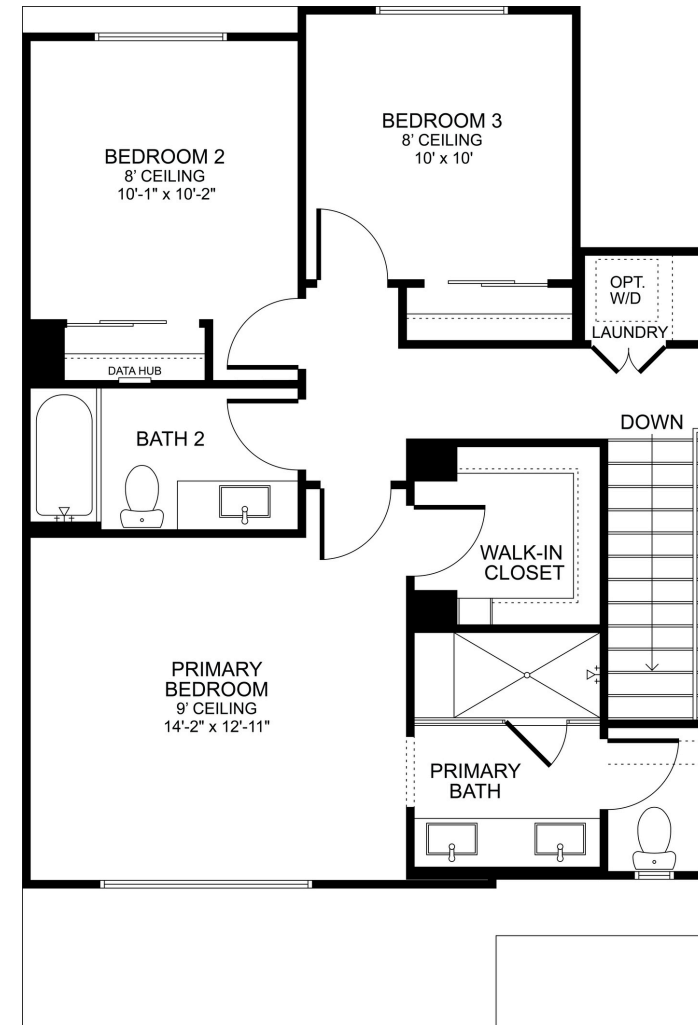
All-electric 3-story home | Approx. 1,875 sq. ft. | Spacious Deck | Walk-in closets at primary suites
4 Bedrooms, including a Junior Primary Suite with Kitchenette Option | 3.5 Baths | 2-car garage



First Floor



Second Floor



Third Floor

SALES OFFICE: 1665 Coral Sea Lane, San Pedro, CA 90732 | (213) 700-6508 | www.rchomesinc.com/community/the-heights-ponte-vista/

In an effort to improve our homes, GDCI-RCH San Pedro, LP reserves the right to change floor plan specifications, exterior elevations, and designs without prior notice. No exact representation is implied. Items shown are artist's renderings and may contain options that are not standard or not included in the purchase price. Square footage is estimated; actual square footage may vary based on location and actual construction conditions. All options and upgrades require additional charges and are subject to construction cut-off dates. Locations and sizes of windows, doors, closets, plumbing fixtures, appliances, A/C unit, cabinets, stair railings, garage doors, and other structural elements may vary from the diagram. Garage sizes may vary from home to home. See a sales counselor for additional details. RC Homes, Inc. DRE #02123697. Information deemed reliable as of October 2025.