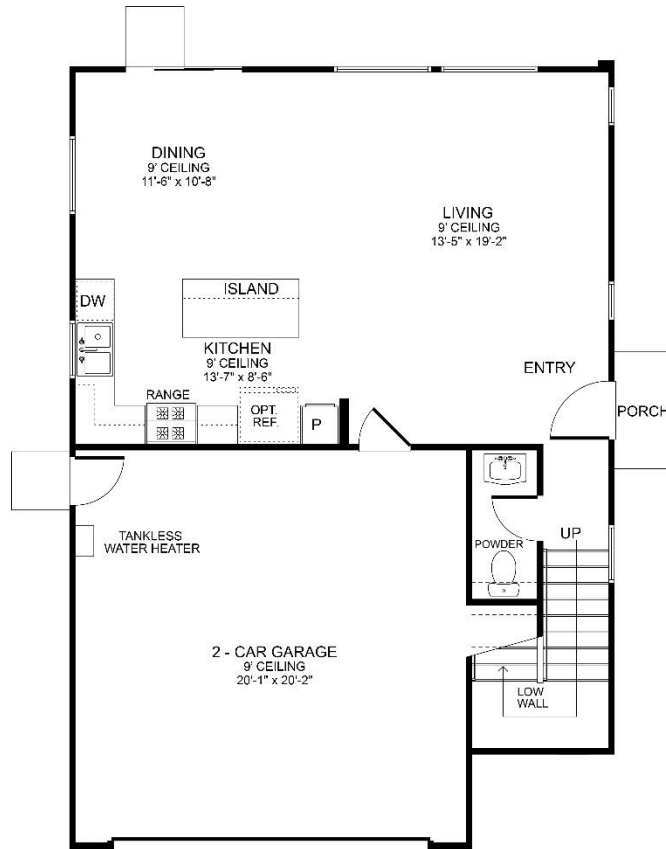


# GARDEN SQUARE

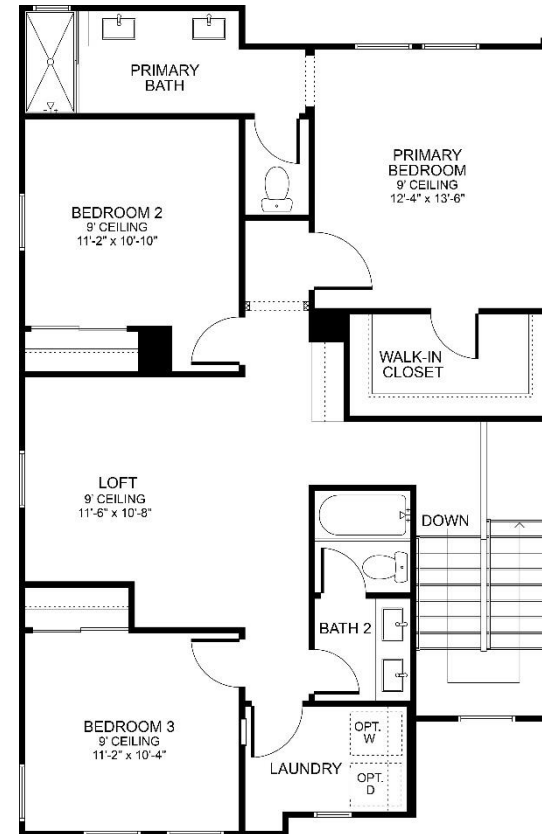
Whittier

## Plan 1BR – Homesite 17 (preliminary)

Approx. 1,680 sq. ft. | 2-car garage  
3 Bedrooms + Spacious Loft | 2.5 Bathrooms  
Kitchen island open to Great Room | Laundry room



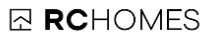
First Floor



Second Floor

Garden Square | 1601 Rolling Greens Way, Whittier, CA 90601 | (213) 700-6508

Richard Castellon, DRE #02022593 | GardenSquare@RCHomesInc.com | www.GardenSquareWhittier.com



ADC Whittier 17, LLC floor plans are subject to change without prior notification. No exact representation is implied. Dimensions and square footage are approximate and may vary based on building location and actual construction. Locations and sizes of windows, doors, closets, plumbing fixtures, appliances, A/C unit, cabinets, stair railings, and other structural elements may vary from the diagram. All options and upgrades require additional charges and are subject to construction cut-off dates. Floor plan is an artist rendering and used for representational purposes only. See a sales counselor for additional details. RC Homes, Inc. DRE #02123697. Information deemed reliable as of October 2023.

