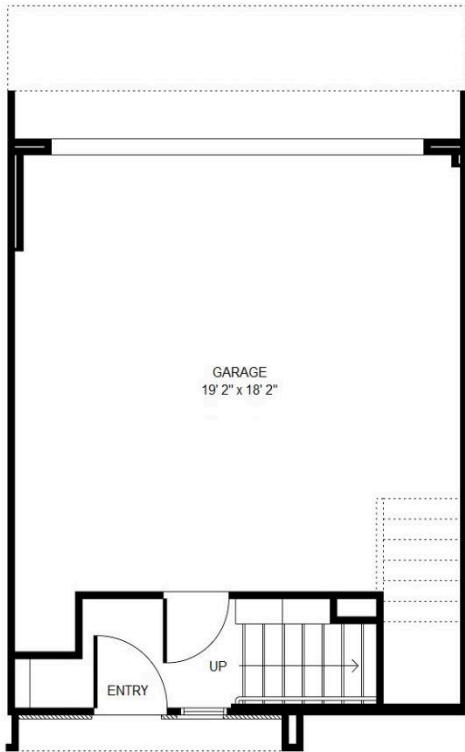


The Dawson

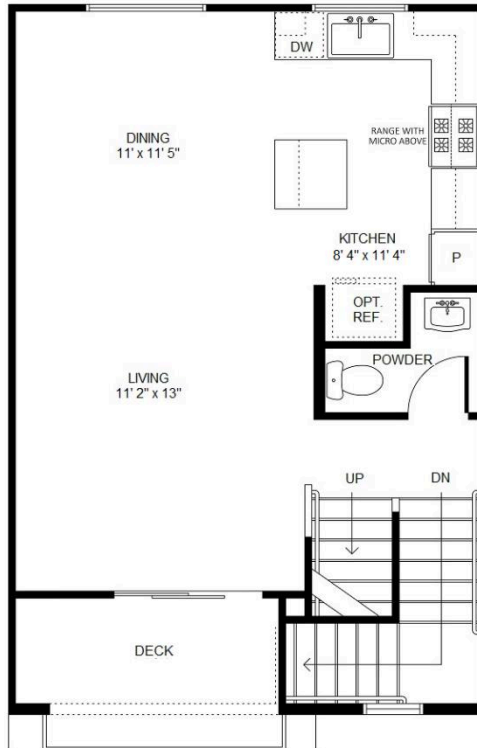
- Long Beach -

Plan 1A (preliminary)

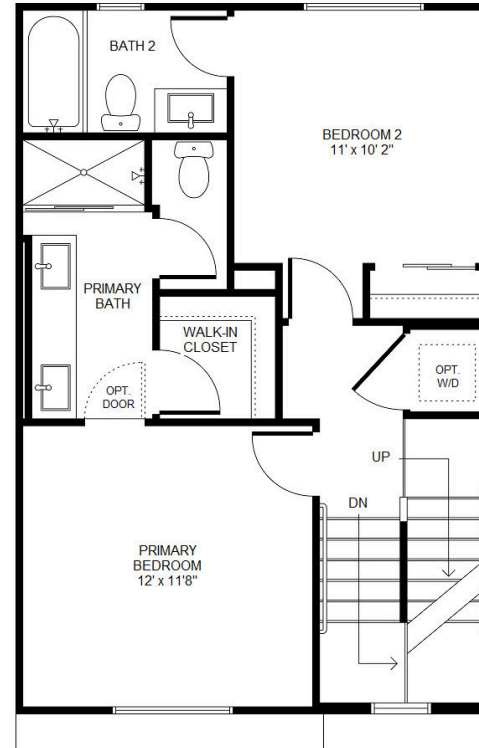
Approx. 1,247 sq. ft. | 3-story plus roof deck | 2-car garage
 2 Bedrooms with adjoining bathroom
 2.5 Bathrooms | Second floor deck



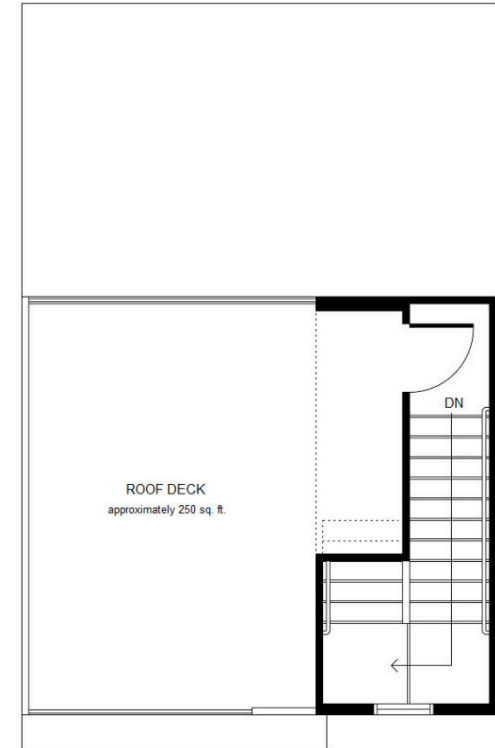
First Floor



Second Floor



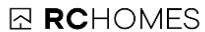
Third Floor



Roof Deck

The Dawson | 618 Dawson Ave., Long Beach, CA 90814 | (562) 900-9790

Theresa Maisen, DRE#01067496 | Theresa@TheDawsonLB.com | www.TheDawsonLB.com



ADC Long Beach, LLC floor plans are subject to change without prior notification. No exact representation is implied. Dimensions and square footage are approximate and may vary based on building location and actual construction. Locations of windows, doors, closets, plumbing fixtures, appliances, A/C unit, cabinets, stair railings, decks and other structural elements may vary from the diagram. All options and upgrades require additional charges and are subject to construction cut-off dates. Floor plan is an artist rendering and used for representational purposes only. See a sales counselor for additional details. RC Homes, Inc. DRE #02123697. Information deemed reliable as of August 23, 2023.

