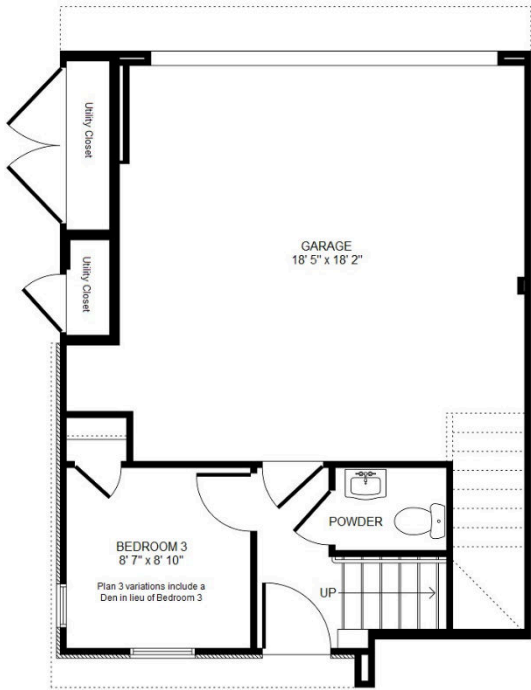


The Dawson

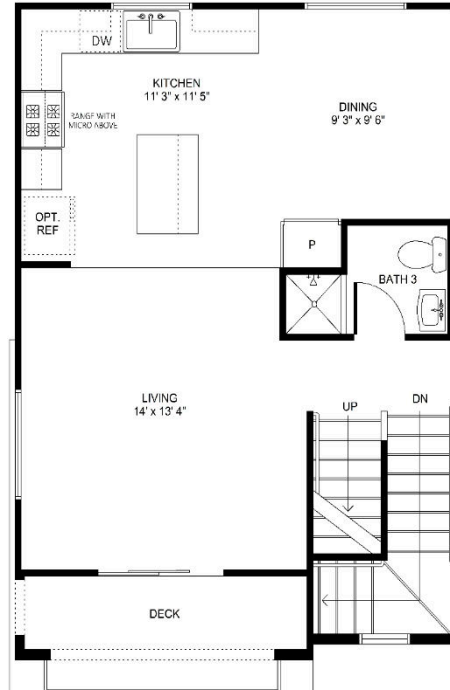
- Long Beach -

Plan 3 (preliminary)

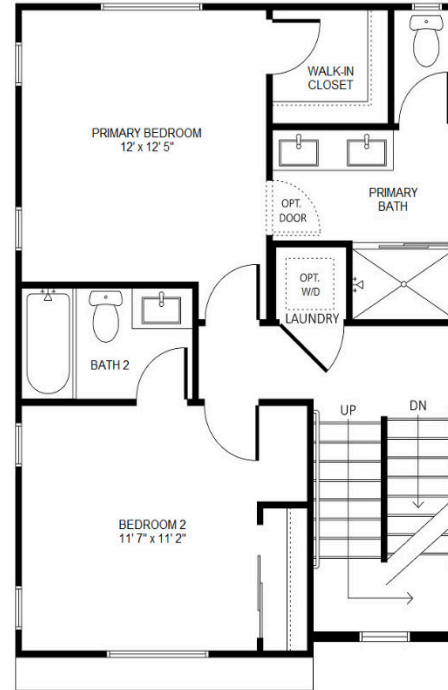
Approx. 1,445 – 1,453 sq. ft. | 3-story plus roof deck | 2-car garage
 2 – 3 Bedrooms
 3.5 Bathrooms | Dual-primary suites



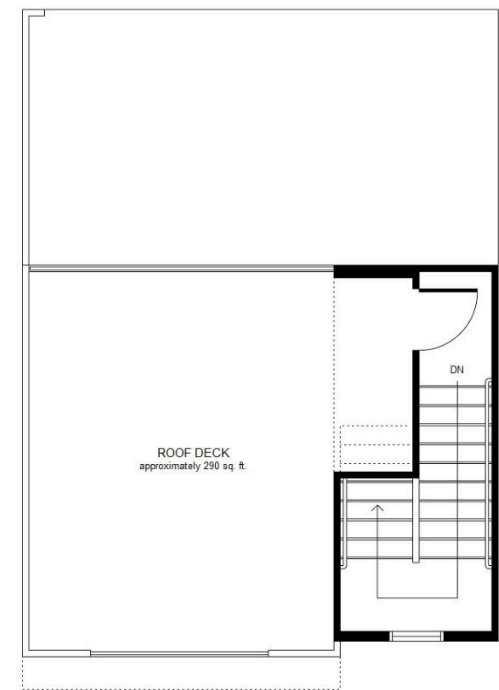
First Floor*



Second Floor



Third Floor

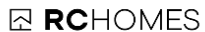


Roof Deck

*Plan 3 features variations in first-floor configurations and exterior utility closet.

The Dawson | 618 Dawson Ave., Long Beach, CA 90814 | (562) 900-9790

Theresa Maisen, DRE#01067496 | Theresa@TheDawsonLB.com | www.TheDawsonLB.com



ADC Long Beach, LLC floor plans are subject to change without prior notification. No exact representation is implied. Dimensions and square footage are approximate and may vary based on building location and actual construction. Locations of windows, doors, closets, plumbing fixtures, appliances, A/C unit, cabinets, stair railings, decks and other structural elements may vary from the diagram. All options and upgrades require additional charges and are subject to construction cut-off dates. Floor plan is an artist rendering and used for representational purposes only. See a sales counselor for additional details. RC Homes, Inc. DRE #02123697. Information deemed reliable as of August 23, 2023.

